

Tutorial: Current-Conducting Couplings.

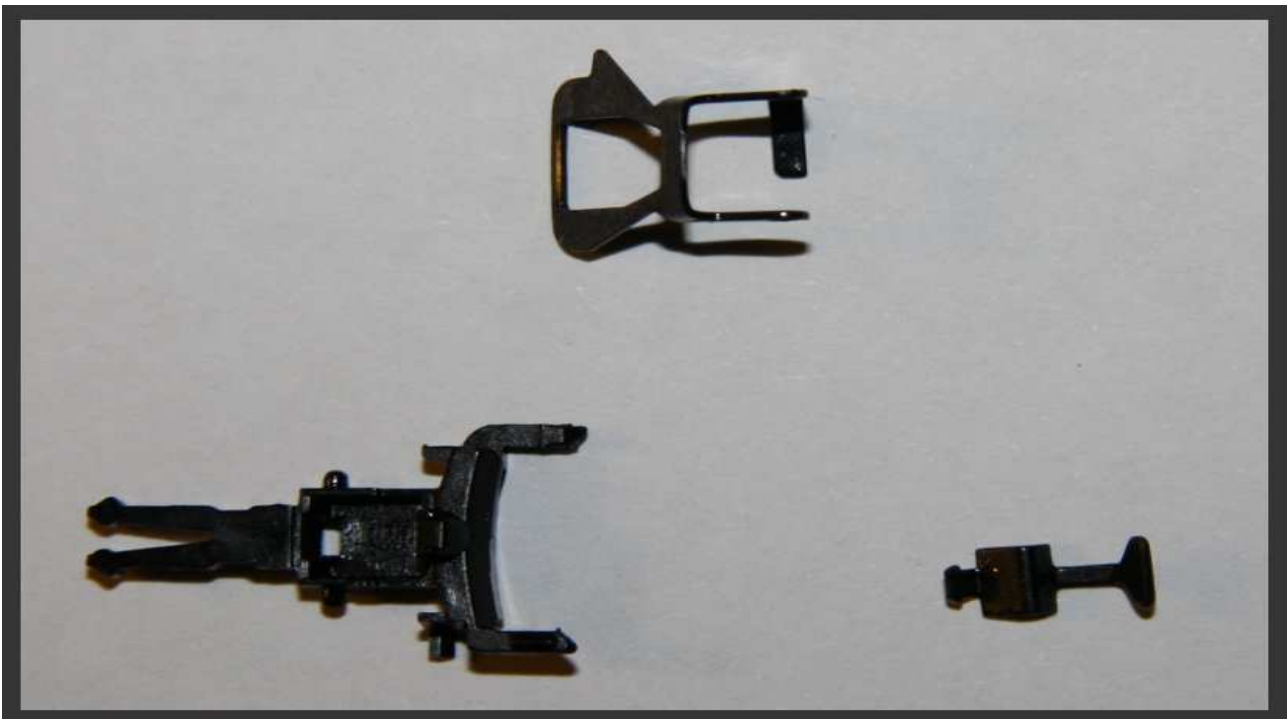
by
ATOM 55 – GIANDI

What you need:

- Claw;
- Scissors;
- Cutter;
- NEM coupling;
- Brass or Copper sheet 0,2/0,3 mm.

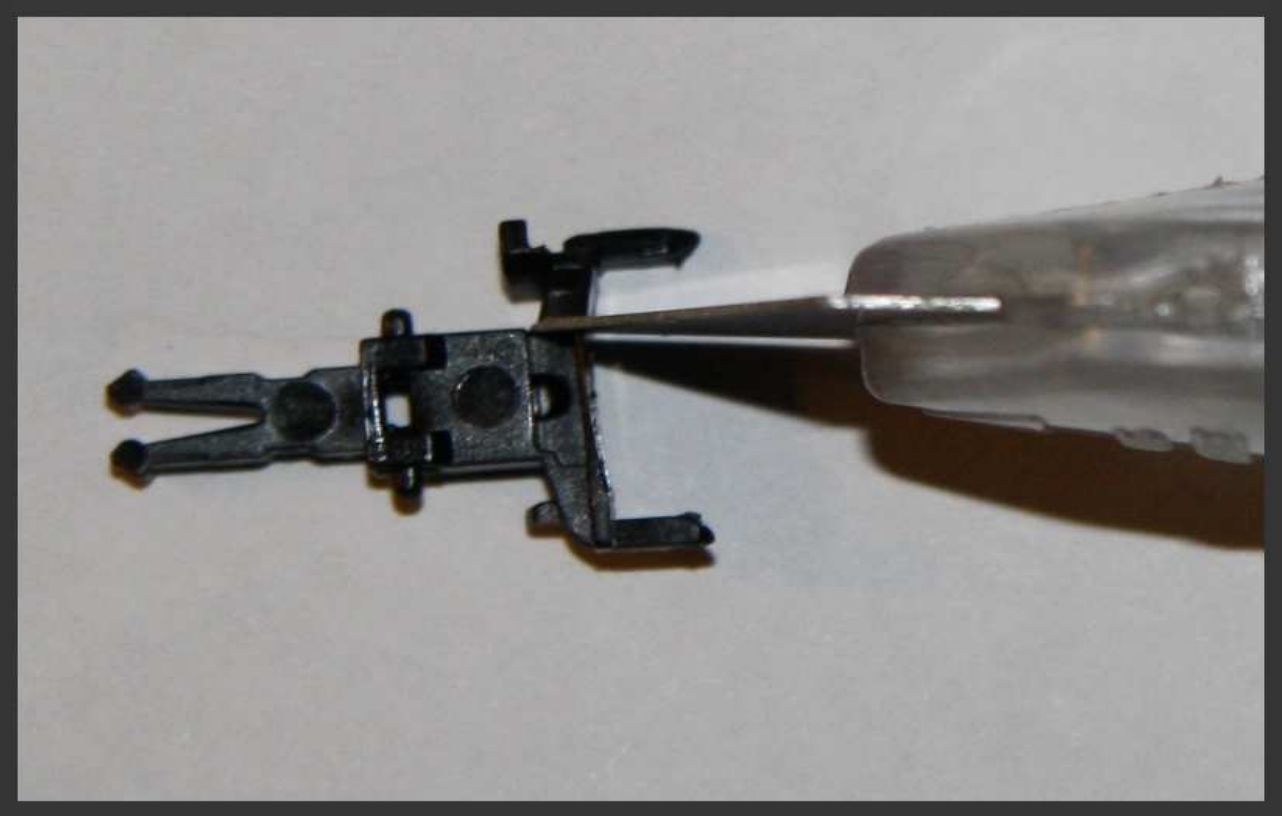
This tutorial will explain how you can bring the power to the carriages without a pickup shoe for each one, which is very costly for both portfolios and for the friction of the train. We will start from the classic NEM hook coupling, with some small modifications adding a small brass or copper strip to reach our goal.

We start by removing the hook (the component in the lower right of the image is no longer necessary):



Hook NEM disassembled.

With a cutter cut the strip:



Right cut.

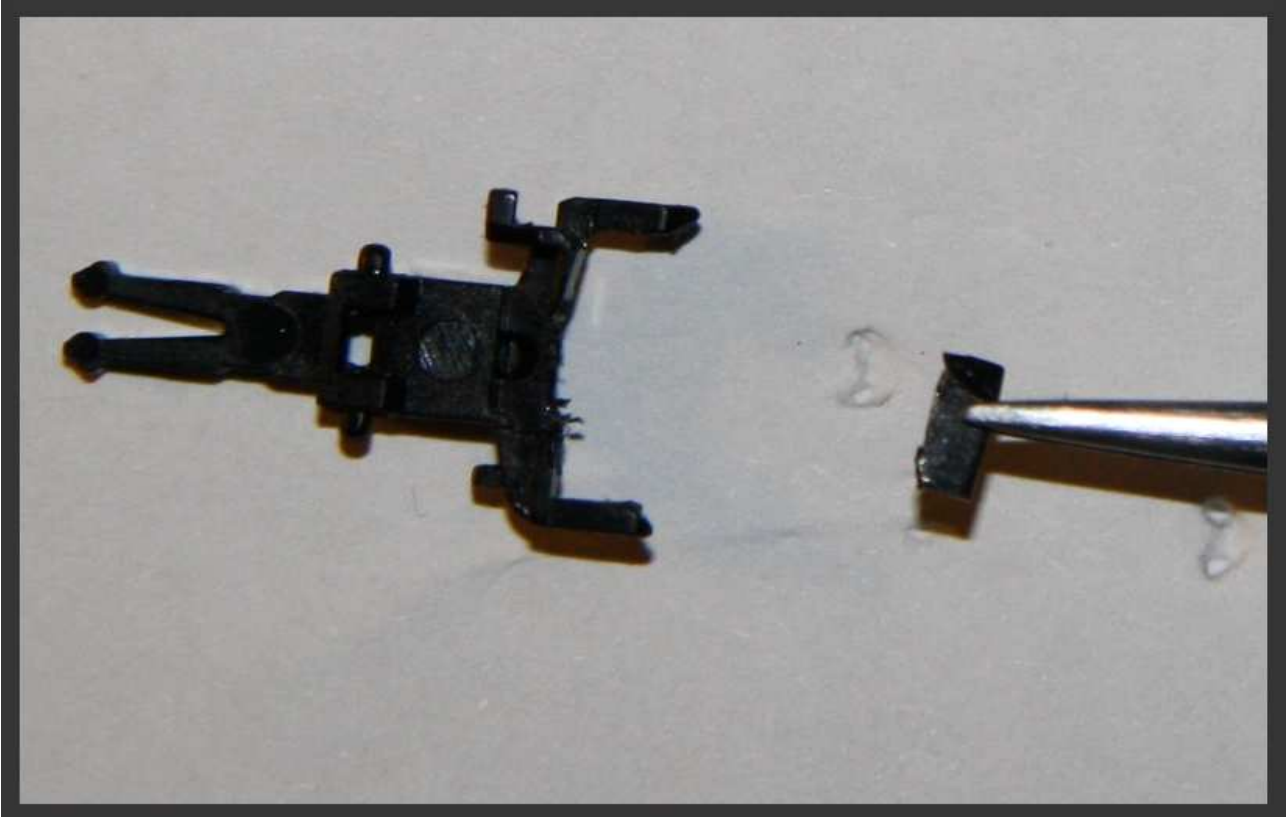


Left cut.

Delete the portion obtained with a small claw:

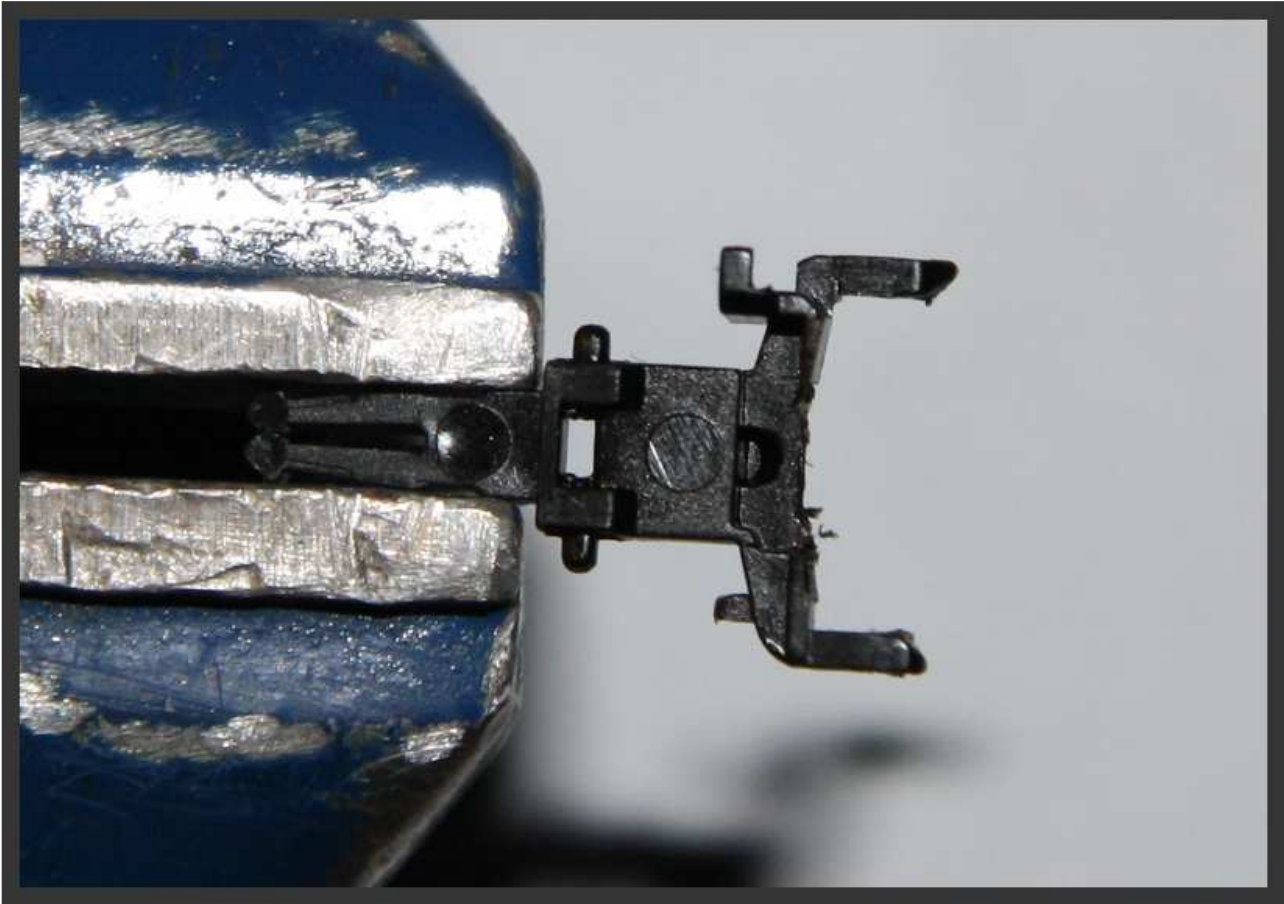


Removed portion.

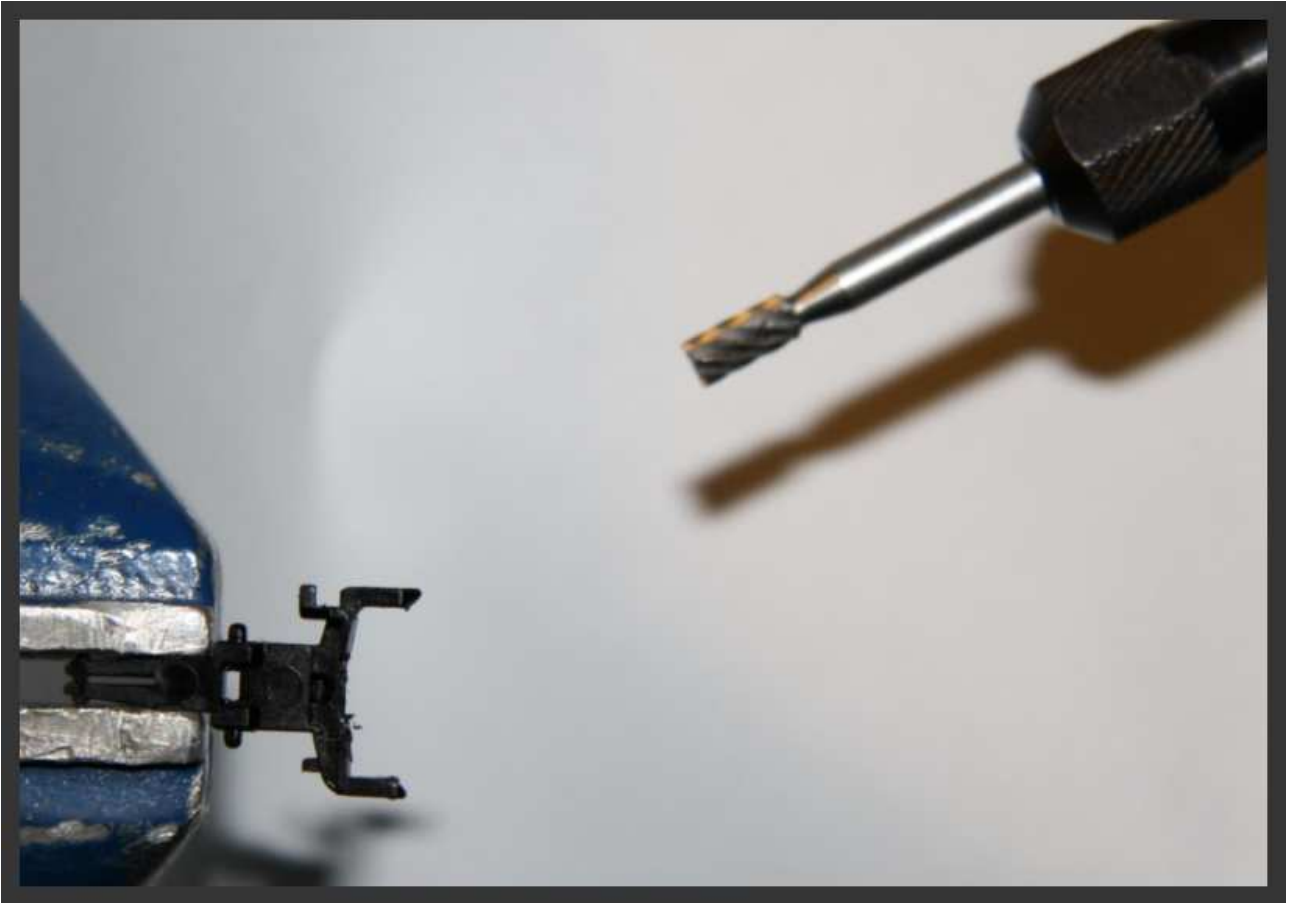


Result.

Proceed by setting the hook in a small grip and prepare to use the Dremel:

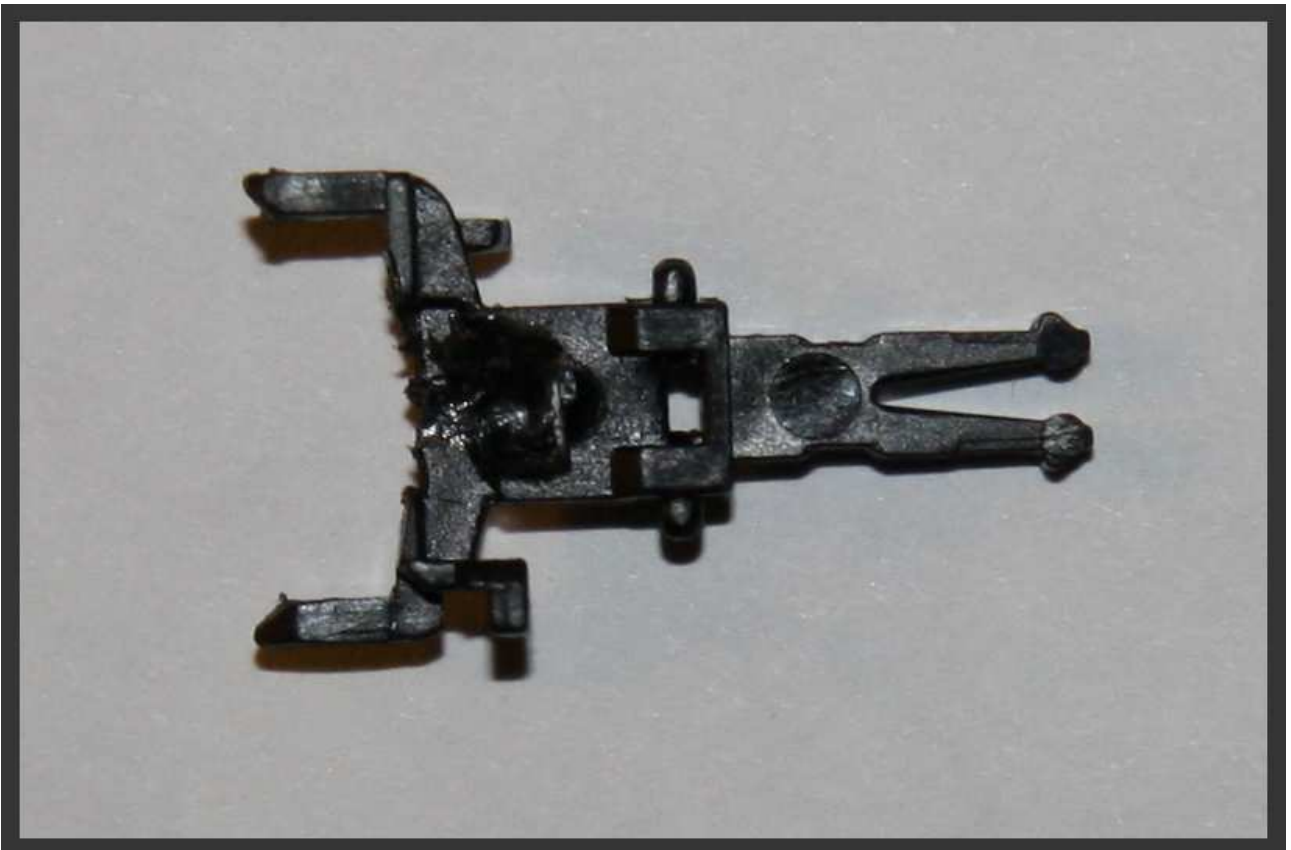


Hook on grip.



Burr Dremel 3mm about.

Dig a little hook with a Dremel and a small lathe. This solution will facilitate the graft between the hooks:



Milling result.

Take the strip of brass, previously cut:



Hook and strip of brass.

Fold the strip until you get a curve similar to that in the illustration:



Hook and strip of brass.



Hook and strip of brass.

Like in the figure, insert the blade into the slot of the hook. For measures, with some

tests you should get the optimal solution.

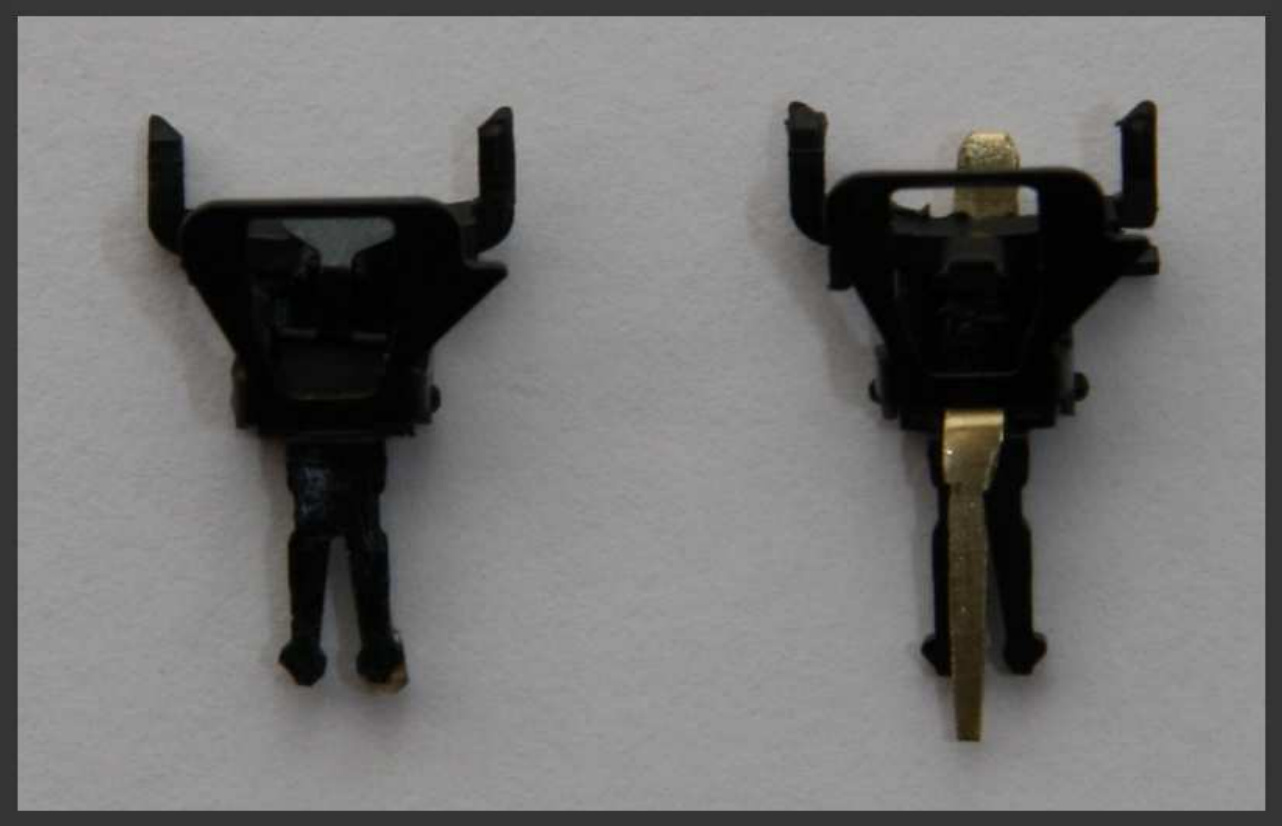


Detail of the hook from above and saw first insertion brass.

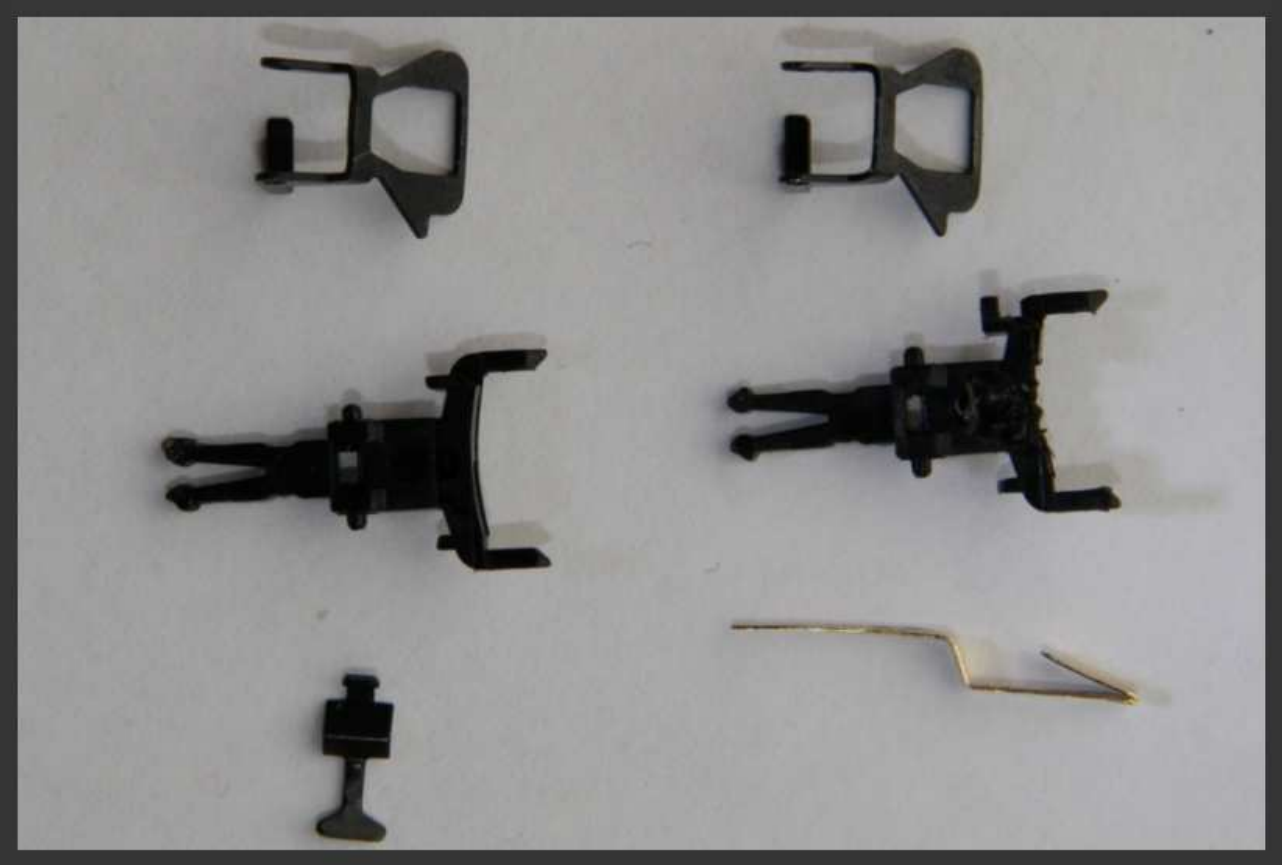


Detail of the hook seen from below.

The final result of our tutorial:

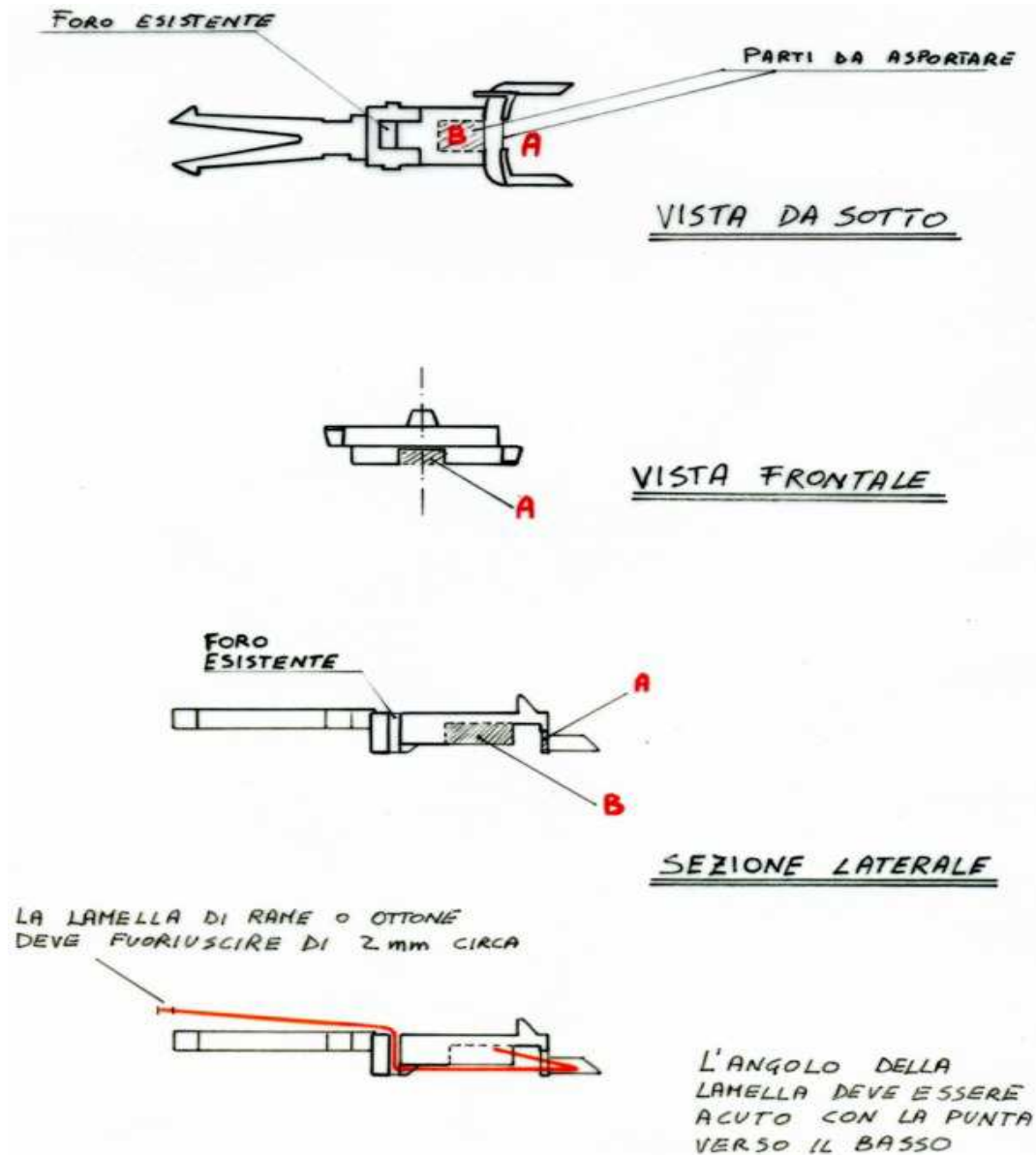


The hook: before and after.



Difference between hooks.

List and parts to be removed:



At the end of this job you will have all your coaches lightened without pickup shoe and only when they are in composition. We recommend that you see also the tutorial "lighting of the coaches" to complete the job with little expense and a lot of satisfaction.
See you soon.

Ernesto
Gianfilippo